



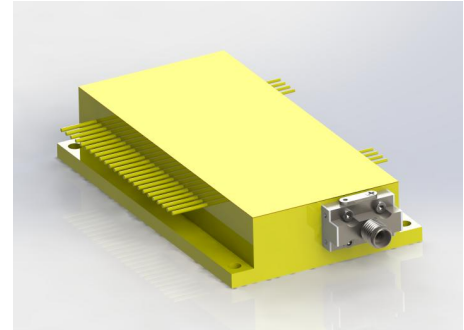
1470/980nm Laser Diode

■ Features

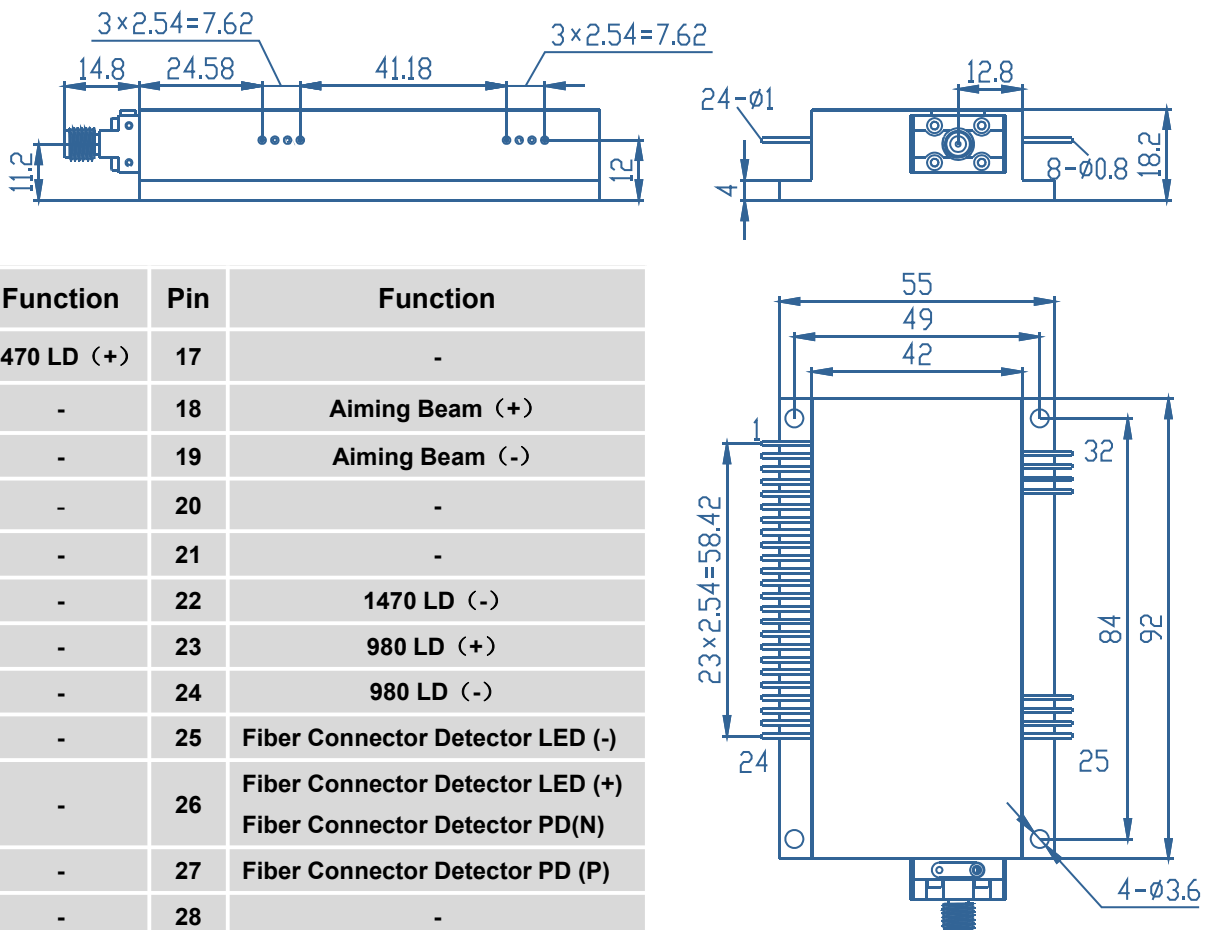
- ◆ High output power of 30/30W
- ◆ 200μm/0.22NA multimode optical fiber
- ◆ Center wavelength 1470/980±10nm

■ Applications

- ◆ Medical Application



Outline Dimension (mm)



Pin	Function	Pin	Function
1	1470 LD (+)	17	-
2	-	18	Aiming Beam (+)
3	-	19	Aiming Beam (-)
4	-	20	-
5	-	21	-
6	-	22	1470 LD (-)
7	-	23	980 LD (+)
8	-	24	980 LD (-)
9	-	25	Fiber Connector Detector LED (-)
10	-	26	Fiber Connector Detector LED (+) Fiber Connector Detector PD(N)
11	-	27	Fiber Connector Detector PD (P)
12	-	28	-
13	-	29	PD (N)
14	-	30	PD (P)
15	-	31	Thermistor
16	-	32	Thermistor

Typical Device Performance (25°C)

	Typical		Unit
Optical			
CW Output Power	30	30	W
Center Wavelength	1470±10	980±10	nm
Spectral Width (90% of Power)	<10.0		nm
Wavelength Shift with Temperature	0.33		nm/°C
Electrical			
Threshold Current	0.5	1.1	A
Operating Current	9.2	18.0	A
Operating Voltage	15.9	3.1	V
Slope Efficiency	1.7	1.8	W / A
Power Conversion Efficiency	20.0	53.0	%
Aiming Beam*			
CW Output Power	2		mW
Center Wavelength	650		nm
Operating Current	-		mA
Operating Voltage	5.0		V
Fiber*			
Fiber Core Diameter	200		μm
Numerical Aperture	0.22		-
Fiber Length	1-5		m
Fiber Connector	-		-

** Customized fiber and connector available.

Absolute Ratings

	Min	Max	Unit
Operating Temperature	10	40	°C
Operating Relative Humidity	-	75	%
Storage Temperature	-20	80	°C
Storage Relative Humidity	-	90	%
Lead Soldering Temperature (10 s max)	-	250	°C

* Measuring specifications.

All figures in this specification are measured by CNI's method and may contain measurement deviations.

The above specifications are for reference purpose only and subjected to change without prior notice.



Changchun New Industries Optoelectronics Tech. Co., Ltd
<http://www.cnilaser.com>

◆ CONTACT

No.888, JinHu Road, High-tech zone, Changchun
130103, R.P. China

Phone: 0086-431-85603799

Fax: 0086-431-87020258