



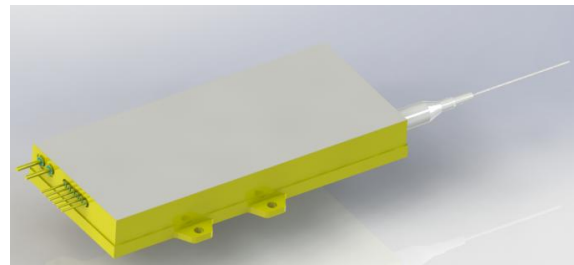
940nm Laser Diode

■ Features

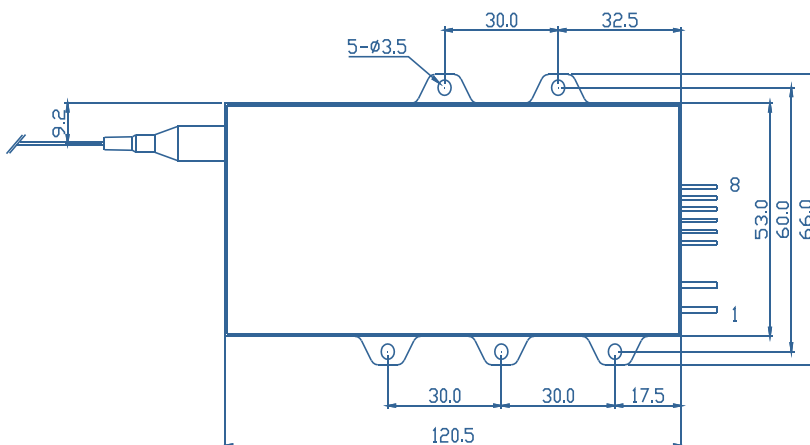
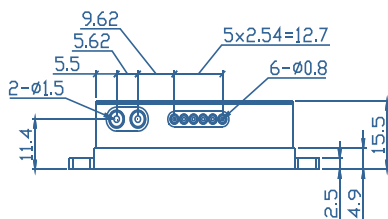
- ◆ High output power of 170W
- ◆ 105μm/0.22NA multimode optical fiber
- ◆ Center wavelength 940±10nm

■ Applications

- ◆ Pumping Source
- ◆ Material Surface Treatment



Outline Dimension (mm)



Pin-out Assignment	
Pin	Function
1	LD (+)
2	LD (-)
3	-
4	-
5	PD (N)
6	PD (P)
7	Thermistor
8	Thermistor

Typical Device Performance (25°C)

	Min	Typical	Max	Unit
Optical				
CW Output Power	-	170	-	W
Center Wavelength	-	940±10	-	nm
Spectral Width (90% of Power)	-	<10.0	-	nm
Wavelength Shift with Temperature	-	0.3	-	nm / °C
Electrical				
Threshold	-	0.75	-	A
Operating Current	-	11	-	A
Operating Voltage	-	32	-	V
Slope Efficiency	-	16.5	-	W / A
Power Conversion Efficiency	-	48	-	%
Fiber*				
Fiber Core Diameter	-	105	-	μm
Fiber Cladding Diameter	-	125	-	-
Fiber Buffer Diameter	-	250	-	-
Numerical Aperture	-	0.22	-	-
Fiber Length	-	1-5	-	m
Fiber Connector	-	SMA905	-	-

* Customized fiber and connector available.

Absolute Ratings

	Min	Max	Unit
Operating Temperature	15	35	°C
Operating Relative Humidity	-	75	%
Cooling Mode	-	Water cooling (25°C)	-
Storage Temperature	-20	80	°C
Storage Relative Humidity	-	90	%
Lead Soldering Temperature (10 s max)	-	250	°C

The above specifications are for reference purpose only and subjected to change without prior notice.

* Measuring specifications.

All figures in this specification are measured by CNI's method and may contain measurement deviations.



Changchun New Industries Optoelectronics Tech. Co., Ltd
<http://www.cnilaser.com>

◆ CONTACT

No.888, JinHu Road, High-tech zone, Changchun
 130103, R.P. China

Phone: 0086-431-85603799

Fax: 0086-431-87020258