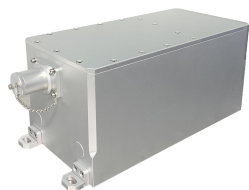


MLL-W-473-Water/400~1500mW



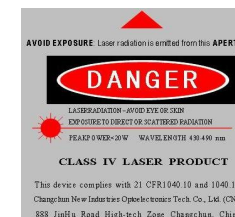
**LD PUMPED ALL-SOLID-STATE
LOW NOISE BLUE LASER**

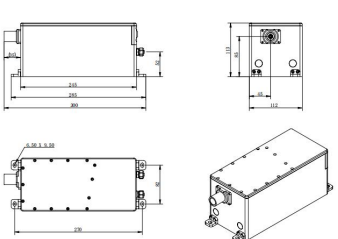
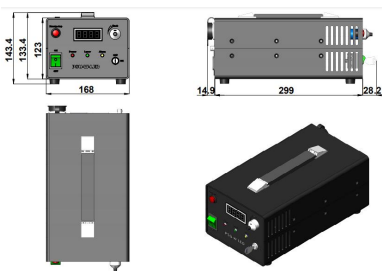
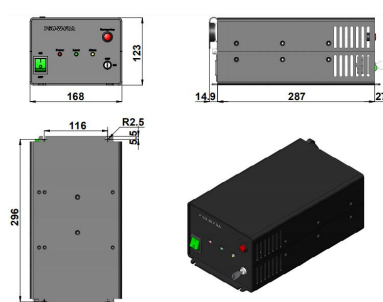
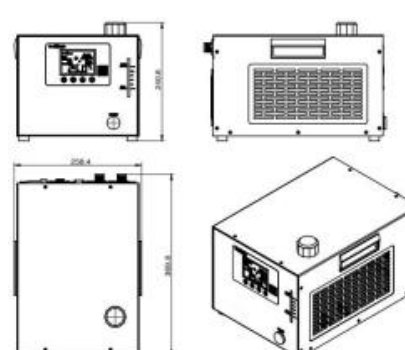
All solid state 473nm low noise laser is made features of ultra compact, long lifetime and easy operating, which is used in fluorescence sensors, Raman spectrum, holography, laser printing, interference, holography, laser printing, chip inspection, physics experiment, etc.



SPECIFICATIONS

| | | |
|---|--|-----------|
| Wavelength (nm) | 473±1 | |
| Operating mode | CW | |
| Output power (mW) | >400, 600, 700, ..., 1500 | |
| Power stability (rms, over 4 hours) | <5%, 3%, 1% | |
| Transverse mode | TEM ₀₀ | |
| Noise of amplitude (rms, 1~20MHz) | <1% | |
| M ² factor | <1.2 | |
| Beam divergence, full angle (mrad) | <1 | |
| Beam diameter at the aperture (1/e ² , mm) | ~2 | |
| Warm-up time (minutes) | <10 | |
| Polarization ratio | >100:1, Horizontal(Vertical Optional) | |
| Beam height from base plate (mm) | 85 | |
| Cooled method | Water Cooled | |
| Operating temperature (°C) | 10~35 | |
| Power supply (90-264VAC) | PSU-W-LED | PSU-W-FDA |
| TTL / Analog modulation | TTL or Analog with 1Hz-1kHz 1kHz-10kHz, 10kHz-30kHz optional | |
| Expected lifetime (hours) | 10000 | |
| Warranty period | 1 year | |



| MLL-W-473-Water | PSU-W-LED | PSU-W-FDA | Water Chiller (WCH-580) |
|--|--|---|---|
|  <p>300(L) × 112 (W) × 113 (H) mm³, 5.0 kg</p> |  <p>342.1 (L) × 168 (W) × 143.4 (H) mm³, 4.2 kg</p> |  <p>329.1 (L) × 168 (W) × 123 (H) mm³, 4.1 kg</p> |  <p>369.8 (L) × 258.4 (W) × 240.6 (H) mm³, 10.5 kg</p> |