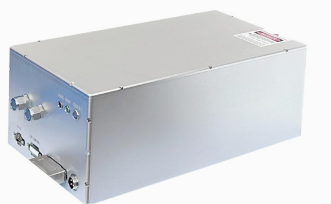


AO-532W-HE 20W



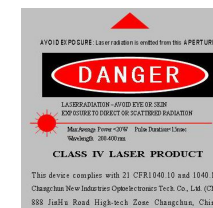
LD PUMPED ALL-SOLID-STATE AOM Q-SWITCHED LASER at 532NM

All solid state AOM Q-switched laser at 532 nm has the features of high peak power, high repetition rate, and short pulse duration, which is used in superhard material processing and diamond cutting and so on.

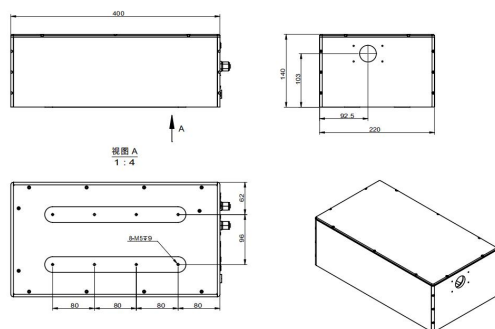


SPECIFICATIONS

Wavelength (nm)	532±1
Operating mode	Acousto-Optic Q-switched
Average power (W)	20W@10kHz
Single pulse energy (μJ)	Average power (W) = Single pulse energy (mJ) * Rep. rate (kHz)
Rep. rate (kHz)	2000@10kHz
Pulse width (ns)	7~100
Ave power stability (over 4 hours)	~15@10kHz
Transverse mode	<3%, <1%
Beam Circularity (%)	TEM ₀₀
M ² factor	>90
Beam divergence, full angle (mrad)	<1.2
Beam diameter at the aperture (1/e ² , mm)	<3
Polarization ratio	~1
Beam height from base plate (mm)	>100:1, Vertical
Warm-up time (minutes)	103
Cooled method	<10
Operating temperature (°C)	Water Cooled
Supply Voltage	10~35
	DC 24V/20.9A

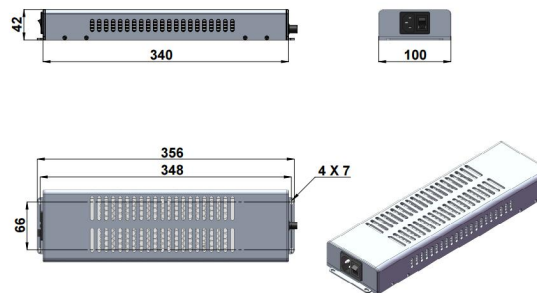


AO-532W-HE *Integrated electronics*



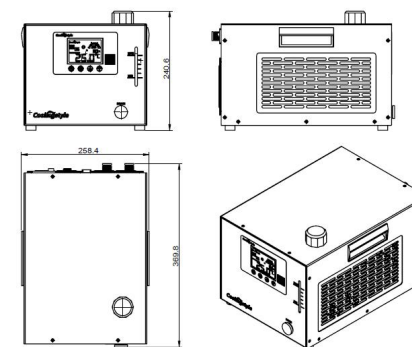
400 (L) × 220 (W) × 140 (H) mm³, 17kg

PSU-24 (Power supply 100-240VAC)



DC24V 20.9A; 356(L) × 100 (W) × 42 (H) mm³, 1.6kg

Water Chiller (WCH-580)



369.8 (L) × 258.4(W) × 240.6 (H) mm³, 10.5 kg