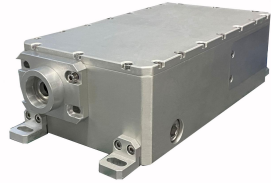


AO-V-355-Water 3W/5W

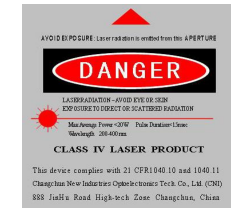


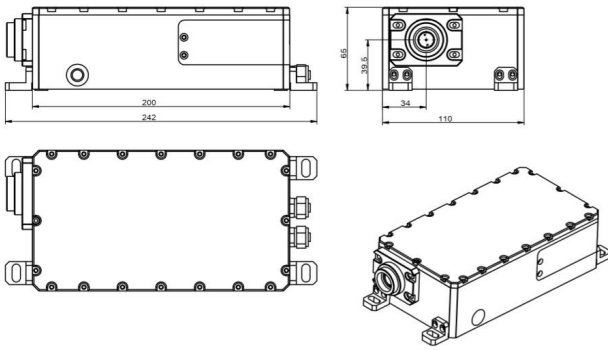
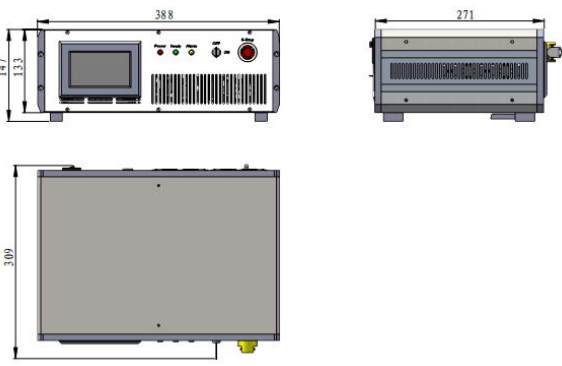

**LD PUMPED ALL-SOLID-STATE  
AOM Q-SWITCHED LASER at 355NM**

All solid state AOM Q-switched laser at 355 nm has the features of high peak power, high repetition rate, and short pulse duration, which is used in scientific research, biology, instrumentation, 3D marking, laser marking, sub-surface engraving and so on.

SPECIFICATIONS

|   |  |            |
|---|--|------------|
| Wavelength (nm)                                       | 355±1  |            |
| Operating mode  | Acousto-Optic Q-switched                                       |            |
| Average power (W)                                     | 3W@30kHz   | 5W@30kHz   |
|   | Average power (W) = Single pulse energy (mJ) * Rep. rate (kHz) |            |
| Single pulse energy (μJ)                              | >100@30kHz   | >160@30kHz |
| Rep. rate (kHz)                                       | 20~100   |            |
| Pulse width (ns)                                      | ~15 @30kHz   |            |
| Transverse mode                                       | TEM <sub>00</sub>  |            |
| Beam Circularity (%)                                  | >90  |            |
| Warm-up time (minutes)                                | <10  |            |
| Beam divergence, full angle (mrad)                    | <2   |            |
| Beam diameter at the aperture (1/e <sup>2</sup> , mm) | 0.8±0.1  |            |
| Beam quality (M <sup>2</sup> )                        | <1.2   |            |
| Beam height from base plate (mm)                      | 39.5   |            |
| Cooled method   | Water Cooled   |            |
| Operating temperature (°C)                            | 10~35  |            |
| Power supply (220/110VAC)                             | PSU-AOM(3U)  |            |



| AO-V-355-Water  | PSU-AOM(3U)   | Water Chiller (WHC-580)  |
|---|---|--|
|  <p>242 (L) × 110 (W) × 65 (H) mm<sup>3</sup>, 2.9 kg</p> |  <p>388 (L) × 309 (W) × 147 (H) mm<sup>3</sup>, 9.6 kg</p> |  <p>363.8 (L) × 253.2 (W) × 230.6 (H) mm<sup>3</sup>, 10.5 kg</p> |