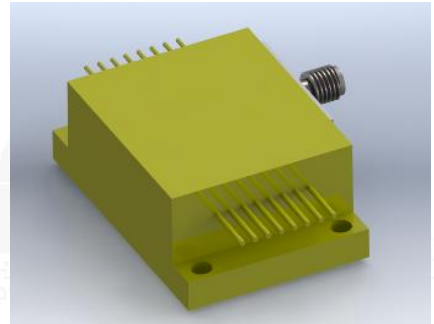


## ■ Features

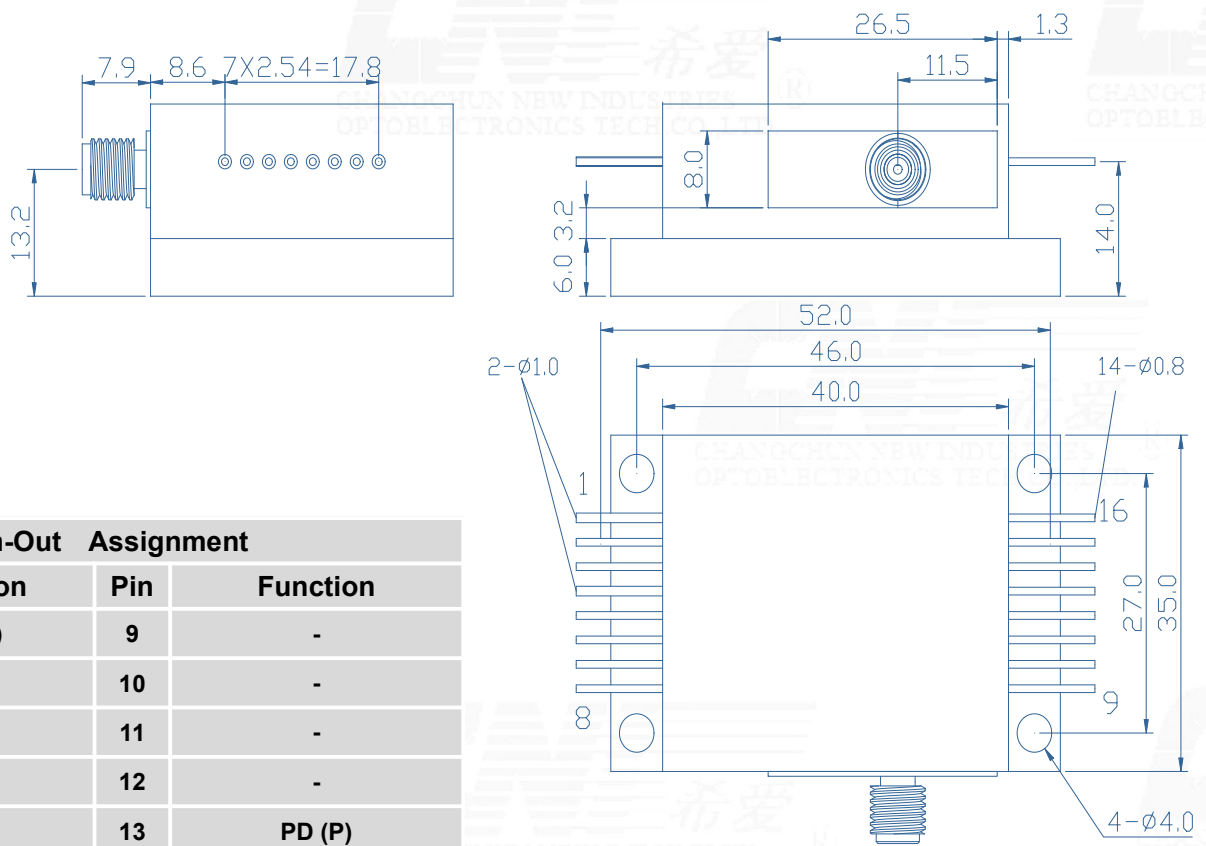
- ◆ High output power of 30W
- ◆ 200μm/0.22NA multimode optical fiber
- ◆ Center wavelength 1064±10nm

## ■ Applications

- ◆ Medical Application
- ◆ Industrial Processing



## Outline Dimension (mm)



## Pin-Out Assignment

Pin	Function	Pin	Function
1	LD (+)	9	-
2	-	10	-
3	-	11	-
4	LD (-)	12	-
5	-	13	PD (P)
6	Aiming Beam(0V)	14	PD (N)
7	Aiming Beam(+5V)*	15	Thermistor
8	-	16	Thermistor

## Typical Device Performance (25°C)

	Min	Typical	Max	Unit
<b>Optical</b>				
CW Output Power	-	30	-	W
Center Wavelength	-	1064±10	-	nm
Spectral Width (90% of Power)	-	<10.0	-	nm
Wavelength Shift with Temperature	-	0.3	-	nm/°C
<b>Electrical</b>				
Threshold	-	0.96	-	A
Operating Current	-	12	-	A
Operating Voltage	-	5.1	-	V
Slope Efficiency	-	2.7	-	W / A
Power Conversion Efficiency	-	49	-	%
<b>Aiming Laser*</b>				
CW Output Power	-	2	-	mW
Center Wavelength	-	650±10	-	nm
Operating Current	-	<30	-	mA
Operating Voltage	-	5	-	V
<b>Fiber*</b>				
Fiber Core Diameter	-	200	-	μm
Numerical Aperture	-	0.22	-	-
Fiber Length	-	1-5	-	m
Fiber Connector	-	SMA905	-	-

\* Customized fiber and connector available.

## Absolute Ratings

	Min	Max	Unit
Operating Temperature	15	35	°C
Operating Relative Humidity	-	75	%
Cooling Mode	-	Water cooling (25°C)	-
Storage Temperature	-20	80	°C
Storage Relative Humidity	-	90	%
Lead Soldering Temperature (10 s max)	-	250	°C

\* Measuring specifications.

All figures in this specification are measured by CNI's method and may contain measurement deviations.

**The above specifications are for reference purpose only and subjected to change without prior notice.**



**Changchun New Industries Optoelectronics Tech. Co., Ltd**  
<http://www.cnilaser.com>

◆ CONTACT

No.888, JinHu Road, High-tech zone, Changchun  
130103, R.P. China

Phone: 0086-431-85603799

Fax: 0086-431-87020258