

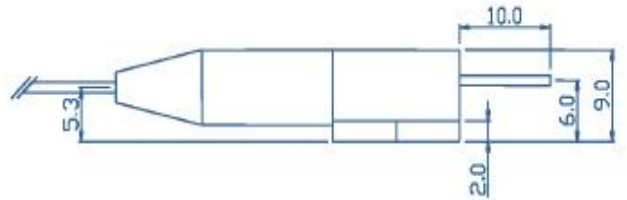
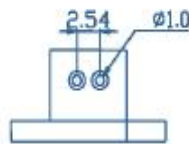
Characteristics
<b>Output Power 4W</b>
<b>Wavelength: 808nm</b>
<b>Fiber Coupling 105μm</b>
<b>Fiber Core Dia. 0.22NA</b>
Applications
<b>Laser pumping, Medical use, Material processing</b>

Parameter		Symbol	Typical	Unit
Optical	CW Out Power	$P_{op}$	4	W
	Center Wavelength	$\lambda$	808±10	nm
	Spectral Width (90% of Power)	$\Delta\lambda$	<3	nm
	Wavelength Shift width Temperature	$\Delta\lambda/\Delta T$	0.35	nm / °C
Electrical	Threshold Current	$I_{th}$	1.8	A
	Operating current	$I_{op}$	5.0	A
	Operating Voltage	$V_{op}$	1.8	V
	Power Conversion Efficiency	$\eta_{ep}$	45	%
Fiber	Fiber Core Diameter	$d_{core}$	105	μm
	Fiber Cladding Diameter	$d_{clad}$	125	μm
	Numerical Aperture	NA	0.22	-
	Connector	-	SMA905	-

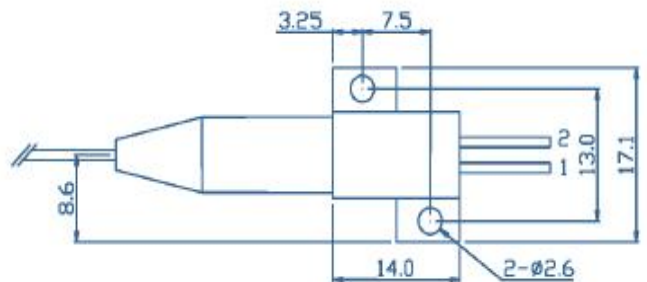
## Other Parameters

Parameter	Operating Temperature/°C	Operating Relative Humidity/%	Storage Temperature/°C	Storage Relative Humidity/%	Lead Soldering Temperature, 10s max/°C
Min	10	-	-20	-	-
Max	40	75	80	90	250

## Package Dimensions (mm)



Pin-Out Assignment	
Pin	Function
1	LD (+)
2	LD (-)



Changchun New Industries Optoelectronics Tech. Co., Ltd  
<http://www.cnilaser.com>

### ◆ CONTACT

No.888, Jinhu Road, High-tech zone, Changchun  
 130103, China

Phone: 0086-431-87033597

Fax: 0086-431-87033597

