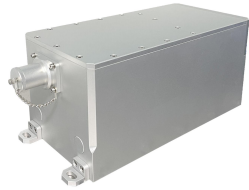


MBL-W-457-Water/1~3W



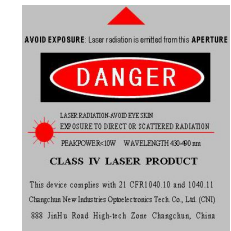
LD PUMPED ALL-SOLID-STATE BLUE LASER

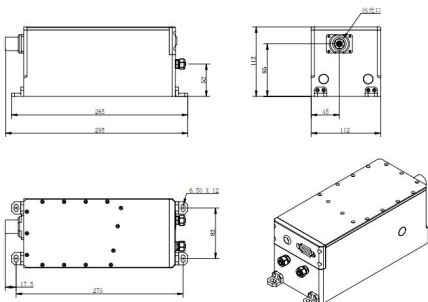
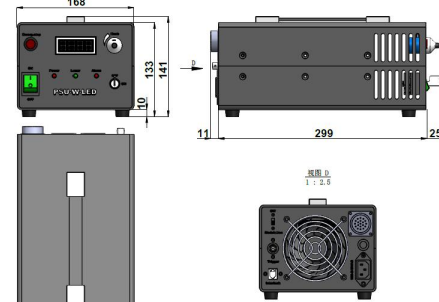
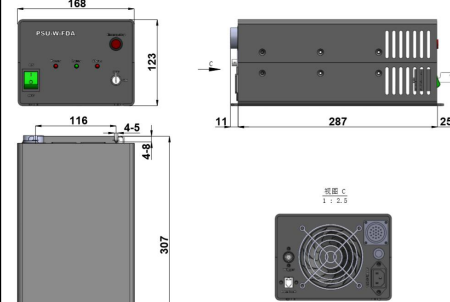

All solid state 457nm blue laser is made features of ultra compact, long lifetime and easy operating, which is used in fluorescence sensors, Raman spectrum, laser printing, holography, laser display, submarine communication, biomedicine, laser lighting show, etc.



SPECIFICATIONS

Wavelength (nm)	457±1
Operating mode	CW
Output power (W)	>1, 2, ..., 3
Power stability (rms, over 4 hours)	<3%, <2%, <1%
Transverse mode	TEM ₀₀
M ² factor	<1.5
Beam divergence, full angle (mrad)	<1.5
Beam diameter at the aperture (1/e ² ,mm)	~2.0
Warm-up time (minutes)	<10
Beam height from base plate (mm)	85
Polarization ratio	>50:1(>100:1 optional)
Cooled method	Water Cooled
Operating temperature (°C)	10~35
Power supply (90-264VAC)	PSU-W-LED/ PSU-W-FDA
TTL / Analog modulation	TTL or Analog with 1Hz-1kHz 1kHz-10kHz, 10kHz-30kHz optional
Expected lifetime (hours)	10000
Warranty period	1 year



MBL-W-457-Water	PSU-W-LED	PSU-W-FDA	Water Chiller (WCH-580)
 <p>295 (L) × 112 (W) × 112 (H) mm³, 5.0 kg</p>	 <p>335 (L) × 168 (W) × 141 (H) mm³, 4.2 kg</p>	 <p>323 (L) × 168 (W) × 123 (H) mm³, 4.1 kg</p>	 <p>363.8 (L) × 253.2 (W) × 230.6 (H) mm³, 10.5 kg</p>