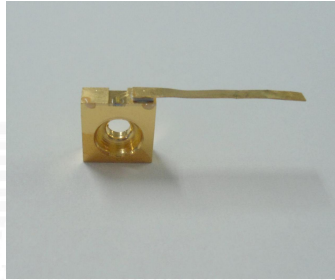


■ Features

- Output Power: 1000mW (CW)
- Efficient Quantum Well Structure
- Standard C-Mount Package



■ Absolute Maximum Ratings

(Tc=25°C)

Item	Symbol	Absolute Maximum Ratings	Unit
Optical Output Power	Po	1000	mW
LD Reverse Voltage	Vr (LD)	2	V
Storage Temperature	Tstg	-40-75	°C
Operating Case Temperature	Tc	10-35	°C

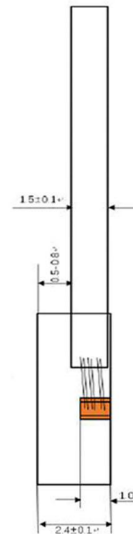
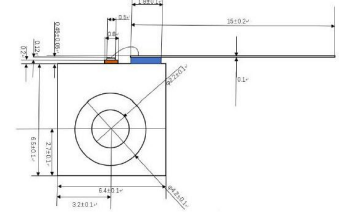
■ Initial Electrical/Optical Characteristics

(Tc=25°C)

Item	Symbol	Typ.	Unit
Optical Output	Po	1000	mW
Peak Wavelength*	λ_p	660±5	nm
Threshold Current	Ith	0.5	A
Operating Current	Iop	1.5	A
Slope Efficiency	η	≥1.1	W/A
Operating Voltage	Vop	2.2	V
Horizontal Beam Divergence	$\theta_{//}$	10	deg.
Vertical Beam Divergence	θ_{\perp}	35	deg.
Polarization		TE	

Outline Dimension

C-Mount Package



(Unit: mm)

* Measuring specifications.

All figures in this specification are measured by CNI's method and may contain measurement deviations

The above specifications are for reference purpose only and subjected to change without prior notice.

