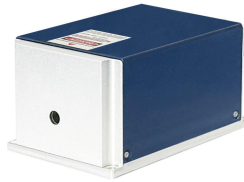




Mini-E-PC-1064/150mW/50uJ



Mini-E SERIES 1064nm LASER
SOURCE FOR LASER
MARKING

Mini-E-PC series laser has the features of high peak power, high repetition rate, and short pulse duration, which is used in scientific research, biology, instrumentation, 3D marking, laser radar and so on.



SPECIFICATIONS

Wavelength (nm)		1064±1
Operating mode		Passively
Average power (mW)		≥150
Single pulse energy (μJ)		>50
Rep. rate (kHz)	FIXED	2.5
	EXT TRI	1-5kHz by external trigger with stable pulse energy, pulse duration and pulse period.
Pulse duration (ns)		6-10
Peak power (kW)		~5
Power stability (rms, 4 hours ± 3°C)		<3%, <2%, <1%
Transverse mode		TEM ₀₀
Beam divergence, full angle (mrad)		<3
Beam diameter at the aperture (mm)		<1
M ²		<1.2
Beam height from base plate (mm)		20.6
Warm-up time (minutes)		<15
Cooled method ¹		Conduction
Operating temperature (°C) ²		10-35 / -20-50
Operating voltage (VDC)		24V/ 8.4A
Expected lifetime (hours)		>10000



LASER HEAD (Driver Integrated)	POWER SUPPLY (100-240VAC)
<p>100 (L) × 62 (W) × 50 (H) mm³, 1.92 kg</p>	<p>103.4(L) × 62 (W) × 40 (H) mm³</p>

1 The laser head needs to be used on a heat sink with 50W heat dissipation.

2 Robust environmental adaptability with customizable wide-temperature.