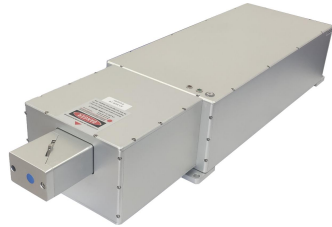


AO-266W/500-2000mW/10-15uJ



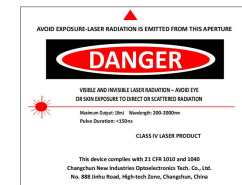
**LD PUMPED ALL-SOLID-STATE
AOM Q-SWITCHED LASER**

All solid state AOM Q-switched laser at 266 nm has the features of high peak power, high repetition rate, and short pulse duration, which is widely used in radar, scientific research, precision research and so on.



SPECIFICATIONS

Wavelength (nm)	266±1	
Operating mode	Actively	
Average power (mW)	500-700@50kHz	800-2000@80kHz
	Average power (W) = Single pulse energy (mJ) * Rep. rate (kHz)	
Single pulse energy (μJ)	>10@50kHz	>15@80kHz
Rep. rate ¹	50-200kHz	80-200kHz
Pulse duration (ns) ²	~10@50kHz	~10 @80kHz
Peak power (kW)	~1@50kHz	~1.5@80kHz
Power stability (rms, 4 hours ± 3°C)	<3%, <2%, <1%	
Transverse mode	TEM ₀₀	
Beam divergence, full angle (mrad)	<1.5	
Beam diameter at the aperture (1/e ² , mm)	~1.0	
M ²	<1.2	
Polarization ratio	>100:1 Horizontal	
Warm-up time (minutes)	<10	
Beam height from base plate (mm)	88.5	90
	Cooled method	
Operating temperature (°C)	10-35	
Operating voltage (VDC)	24V/13A (AO-266W-I)	30V/18.6A (AO-266W-II)
Expected lifetime (hours)	>10000	



<p>LASER HEAD (Driver Integrated) (AO-266W-I)</p> <p>588 (L) × 222 (W) × 122 (H) mm³, 20 kg</p>	<p>POWER SUPPLY PSU-24 (100-240VAC) optional</p> <p>199 (L) × 99 (W) × 50 (H) mm³, 0.9 kg</p>
<p>LASER HEAD (Driver Integrated) (AO-266W-II)</p> <p>695 (L) × 195 (W) × 124 (H) mm³, 21.15 kg</p>	<p>POWER SUPPLY PSU-30 (100-240VAC) optional</p> <p>230 (L) × 127 (W) × 40.5 (H) mm³, 1 kg</p>
<p>POWER SUPPLY PSU-24/30-P³ (100-240VAC) optional</p> <p>210 (L) × 150 (W) × 112.3 (H) mm³, 2.75 kg</p>	<p>WATER CHILLER (WCH-580)</p> <p>369.8 (L) × 258.4 (W) × 240.6 (H) mm³, 10.5 kg</p>

1 Other rep.rate range available on request.

2 Pulse width not tunable, the value varies with different frequency.

3 Parameters can be adjusted.(on/off, Rep. Rate, etc.)