

FS-H-515E/30-60W

FEMTOSECOND PULSED LASER AT 515nm

All Fiber Femtosecond pulsed laser at 515nm is made features of short pulse duration, high repetition rate, high stability and good beam quality, which is used in optical microscope, photon imaging, physics experiment, etc.

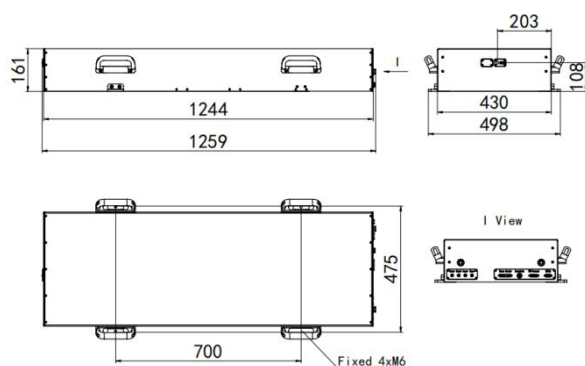


SPECIFICATIONS

Wavelength (nm)	515±5
Operating mode	Pulsed
Average power (W) ¹	30-60 (60W@40MHz&80MHz)
Single pulse energy (nJ)	750-1500 (1500nJ @40MHz)
Rep. rate (MHz) ²	20-120
Pulse duration (fs)	<250
Ave power stability (rms, 4 hours±3°C)	<2%, <1%
Warm-up time (minutes)	<10
Transverse mode	TEM ₀₀
Beam divergence, full angle (mrad)	<1.0
Beam diameter at the aperture (1/e ² ,mm)	<3
M ² factor	<1.3
Beam height from base plate (mm)	108
Polarization ratio	>100:1 Horizontal
Cooled method	Water cooled
Operating temperature (°C)	10-35
Power supply (100-240VAC)	RAD1PS
Expected lifetime (hours)	>10000

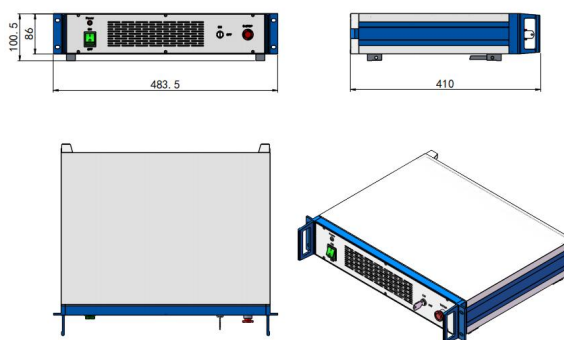


LASER HEAD (DRIVER Integrated)



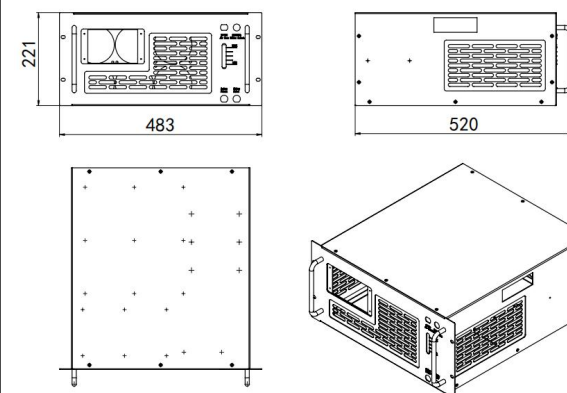
1259 (L)×498 (W)×161(H) mm³,75kg

POWER SUPPLY



410 (L) ×483.5 (W) ×110.5 (H) mm³,4.5 kg

WATER CHILLER



520 (L) ×483 (W) ×221 (H) mm³,22kg

1 One fixed value between 30-60W.

2 One fixed value between 20-120MHz.