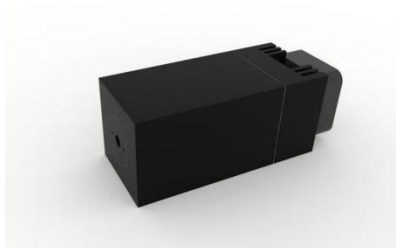




中国长春新产业光电技术有限公司  
Changchun New Industries Optoelectronics Tech. Co., Ltd

## PGL-FS-808



Diode infrared laser module at 808nm is made features of ultra compact, long lifetime, low cost and easy operating, which made it be used widely in measurement, communication, spectrum analysis, etc.

### SYSTEM SPECIFICATIONS\*

Wavelength	nm	808	
Wavelength tolerance	nm	±10	
Output power	mW	1-100	1-200
Power stability(rms, over 4 hours)		<5%, <3%, <1%	
Operating mode		CW	
Transverse mode		Near TEM <sub>00</sub>	Multimode
Beam diameter at the aperture(1/e <sup>2</sup> )	mm	~4.5	~6
Beam divergence, full angle	mrad	<1	<15
Warm-up time	minutes	<10	
Beam height from base plate	mm	15	
Expected lifetime	hours	10000	
Warranty	years	1	

### ELECTRICAL SPECIFICATIONS

Operating voltage(PSU-II-OEM)	5V (TTL30kHz or Analog 0-5V,optional)
Connection	Cable with flying leads
Operating voltage(PSU-V-OEM)	100-240VAC(TTL30kHz and Analog 0-5V,optional)
Operating voltage(PSU-I-OEM)	12VDC (TTL30kHz and Analog 0-5V,optional)
Connection	9 pin connector

### ENVIRONMENTAL CONDITIONS

Operating temperature	-10°C to 50°C
Storage temperature	-20°C to 80°C
Humidity	< 90%, non-condensing

### MECHANICAL SPECIFICATIONS

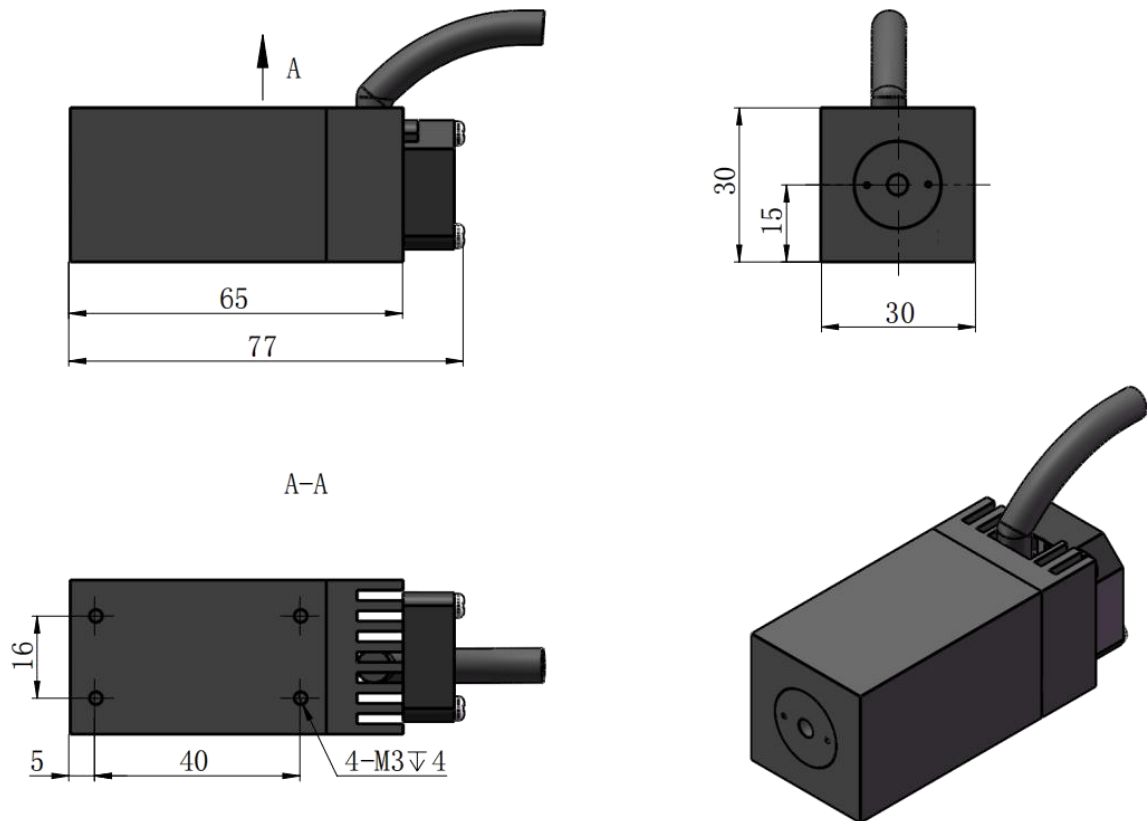
Dimensions of laser head	77(L)×30(W)×30(H)mm <sup>3</sup>
Material	Aluminum

\*All testing data under the conditions of temperature 25°C.

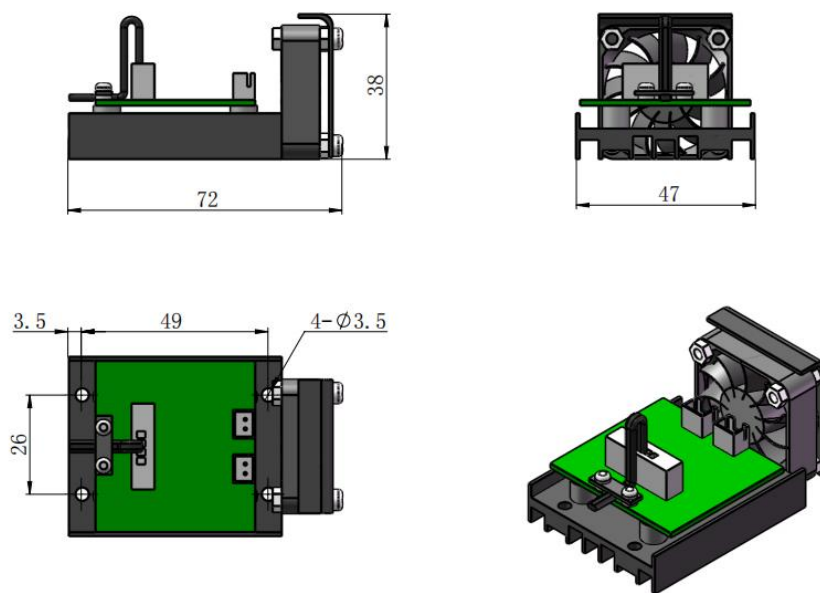


中国长春新产业光电技术有限公司  
Changchun New Industries Optoelectronics Tech. Co., Ltd

Dimensions of laser head(77×30×30mm<sup>3</sup>)



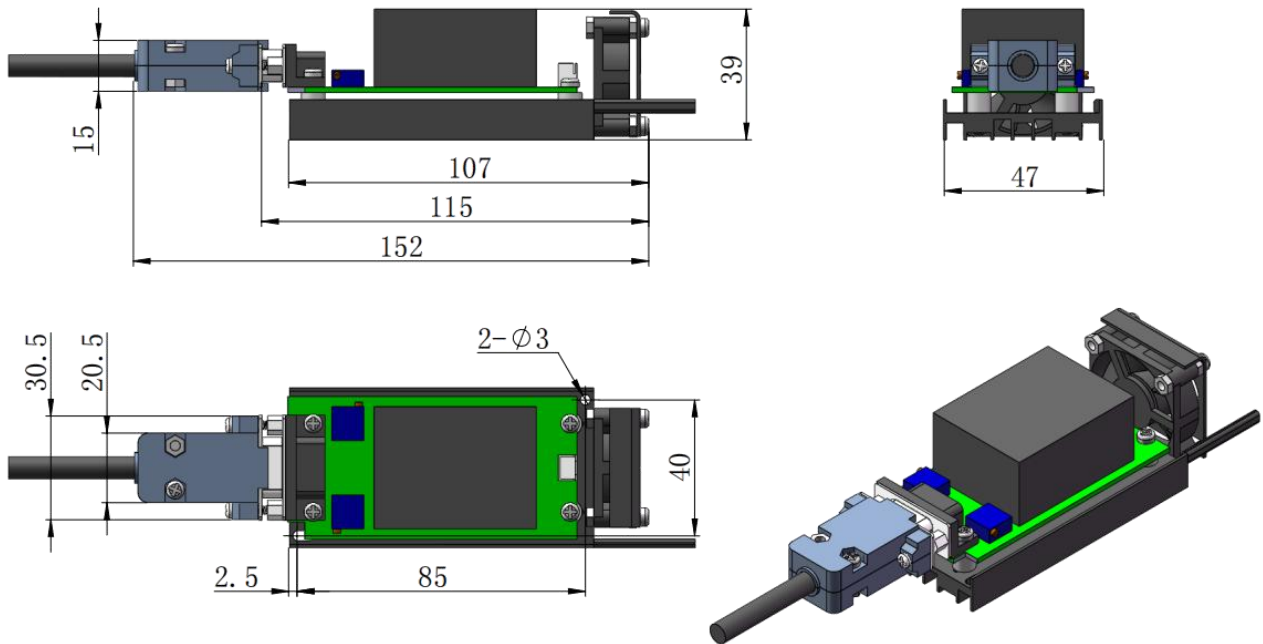
Dimensions of PSU-II-OEM power supply(72×47×38mm<sup>3</sup>, 5VDC, TTL 30kHz or Analog 0-5V)



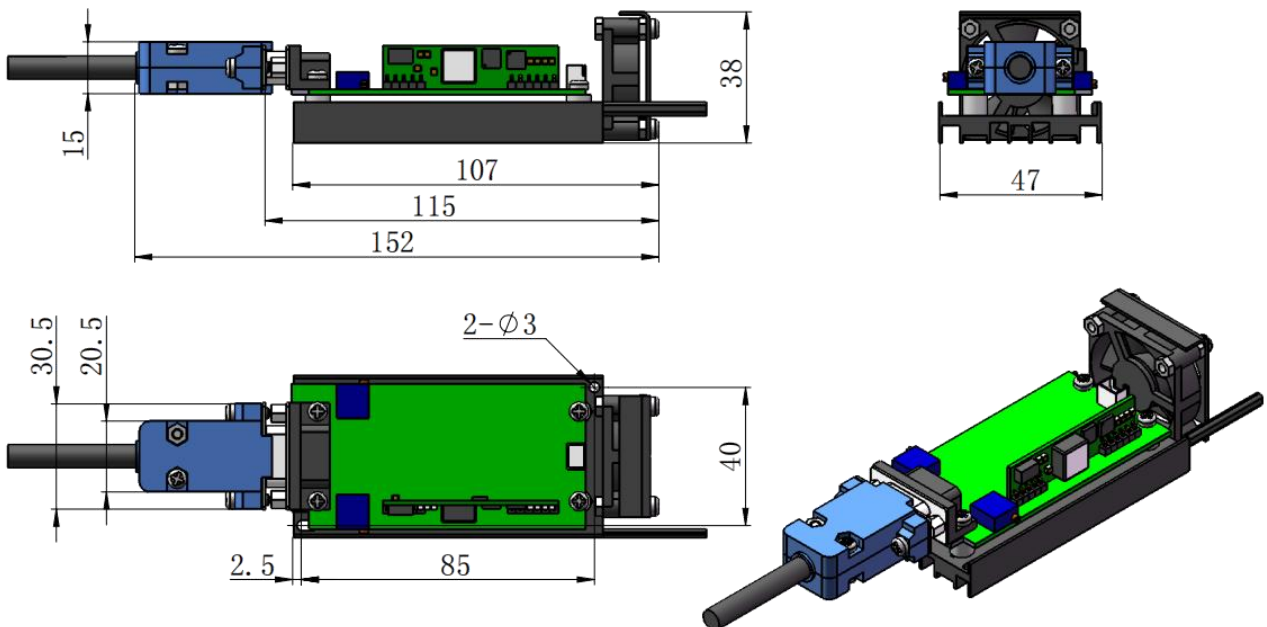


中国长春新产业光电技术有限公司  
Changchun New Industries Optoelectronics Tech. Co., Ltd

Dimensions of PSU-V-OEM power supply  
(107×47×39mm<sup>3</sup>, 100-240VAC, TTL 30kHz and Analog 0-5V)



Dimensions of PSU-I-OEM power supply(107×47×38mm<sup>3</sup>, 5/12VDC, TTL 30kHz and Analog 0-5V)





中国长春新产业光电技术有限公司  
Changchun New Industries Optoelectronics Tech. Co., Ltd

Dimensions of PSU-V-OEM and PSU-I-OEM power supply with dust cover(110×70×47mm<sup>3</sup>)

