

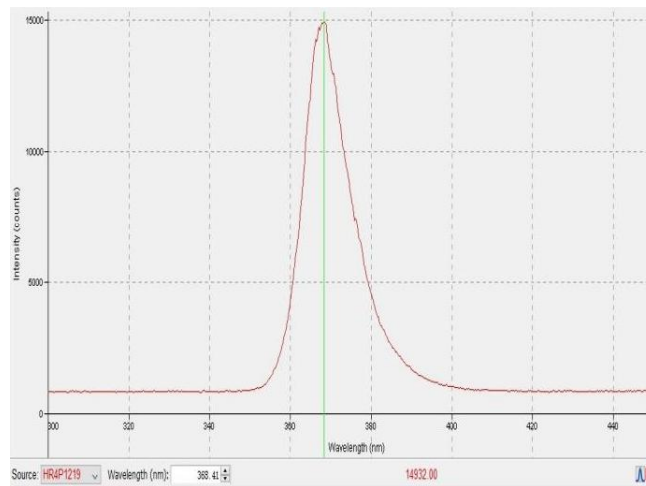


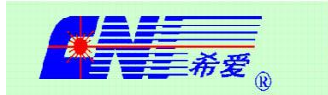
### Performance Advantages:

- ◆ High brightness, high efficiency
- ◆ Precise adjustment of brightness
- ◆ Support TTL control output
- ◆ Customizable

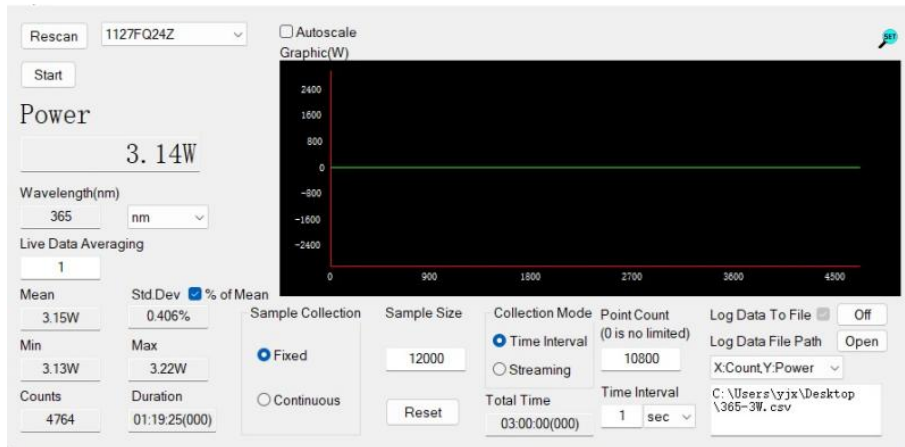
<b>Product Model</b>	SLE-I
<b>Channel</b>	1
<b>Wavelength</b>	365nm
<b>Power</b>	3000mW
<b>Control Mode</b>	0~100% dimming, accuracy of 1%
<b>ON/OFF Response Times</b>	Rising/ Descending Edge (10%~90%) < 50us
<b>Operating Mode</b>	Continuous Output, Default TTL Modulation (Analog Modulation Optional)
<b>Control Mode</b>	Support RS232 host computer control
<b>Control Options</b>	SMA - External trigger TTL signal (external trigger analog modulation optional) Serial Interface (RS232) - Light Output ON/OFF and brightness adjusting Manual control box (optional) - Light Output ON/OFF and brightness adjusting
<b>Optical Transmission</b>	3mm diameter liquid optical waveguide (LLG)
<b>Operating Temperature</b>	10~35°C
<b>Power Input</b>	DC12V
<b>Cooled Method</b>	Air Cooled
<b>Size</b>	171mmx114mmx100mm (Reference)
<b>Warranty</b>	2 Years

### Spectrogram:





### Output Power and stability testing after fiber:



### Dimensions:

